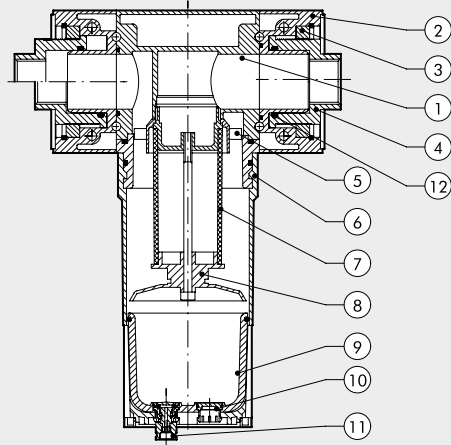


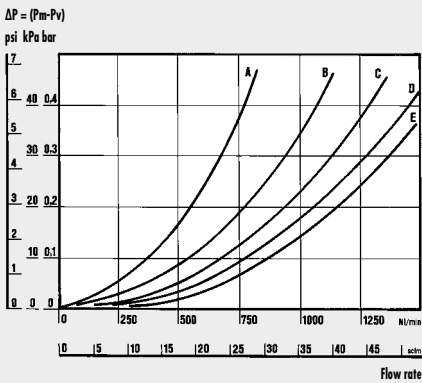
COMPONENTS FIL 400

- ① Aluminium body
- ② Aluminium end plate
- ③ OT58 brass retaining ring
- ④ Anodized aluminium threaded bush, axial adjustment
- ⑤ Technopolymer centrifuge
- ⑥ Aluminium bowl
- ⑦ Sintered bronze filter cartridge
- ⑧ Aluminium screen
- ⑨ Clear technopolymer glass
- ⑩ Technopolymer plug
- ⑪ Drain (RMSA)
- ⑫ NBR gaskets

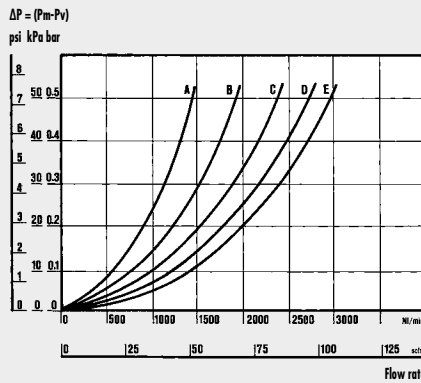


FLOW CHARTS

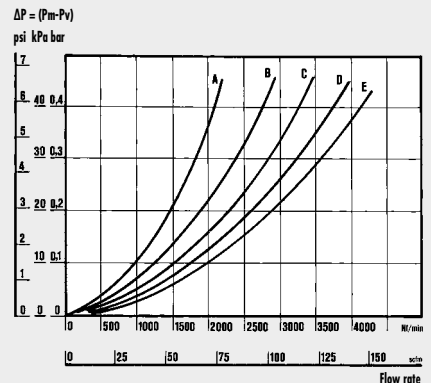
FIL 100 1/4 - 3/8



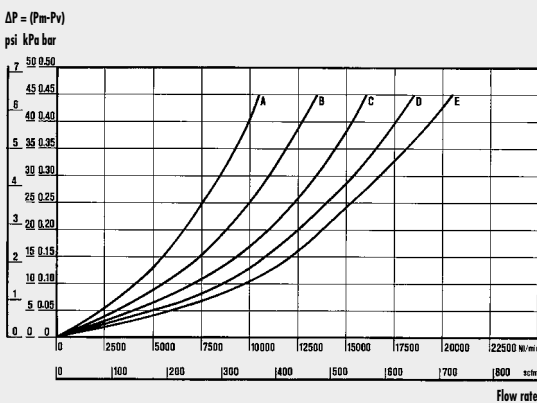
FIL 200 1/4 - 3/8 - 1/2



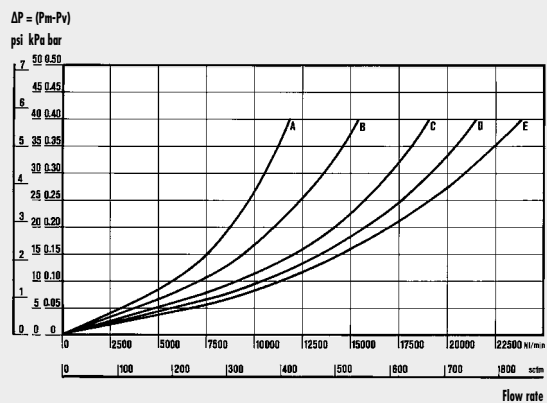
FIL 300 1/2 - 3/4 - 1



FIL 400 1"



FIL 400 2"



• Flow tests carried out at the Department of Mechanics, Turin Polytechnic, using the computerized test bench following CETOP RP50R recommendations (ISO DIS 6358-2-approved) with ISO 5167 diaphragm gauge.

- (A) = 2 bar - 0.2 MPa - 29 psi
- (B) = 4 bar - 0.4 MPa - 58 psi
- (C) = 6 bar - 0.6 MPa - 87 psi
- (D) = 8 bar - 0.8 MPa - 116 psi
- (E) = 10 bar - 1 MPa - 145 psi

